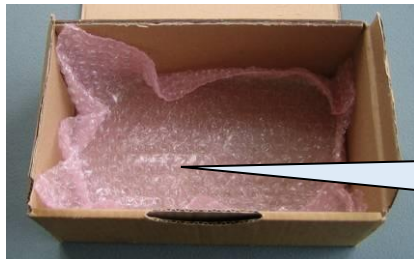
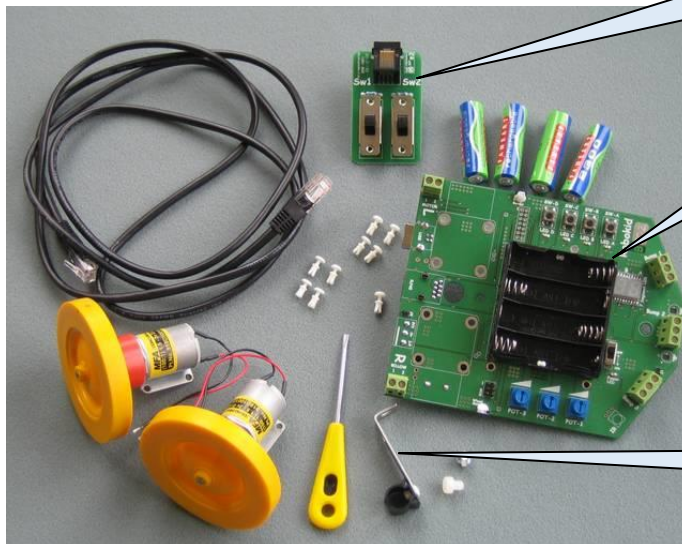


Activity 1 – Build Procedure



When you unpack the circuit board put the bag in the bottom of the box to protect your robot when it is built.

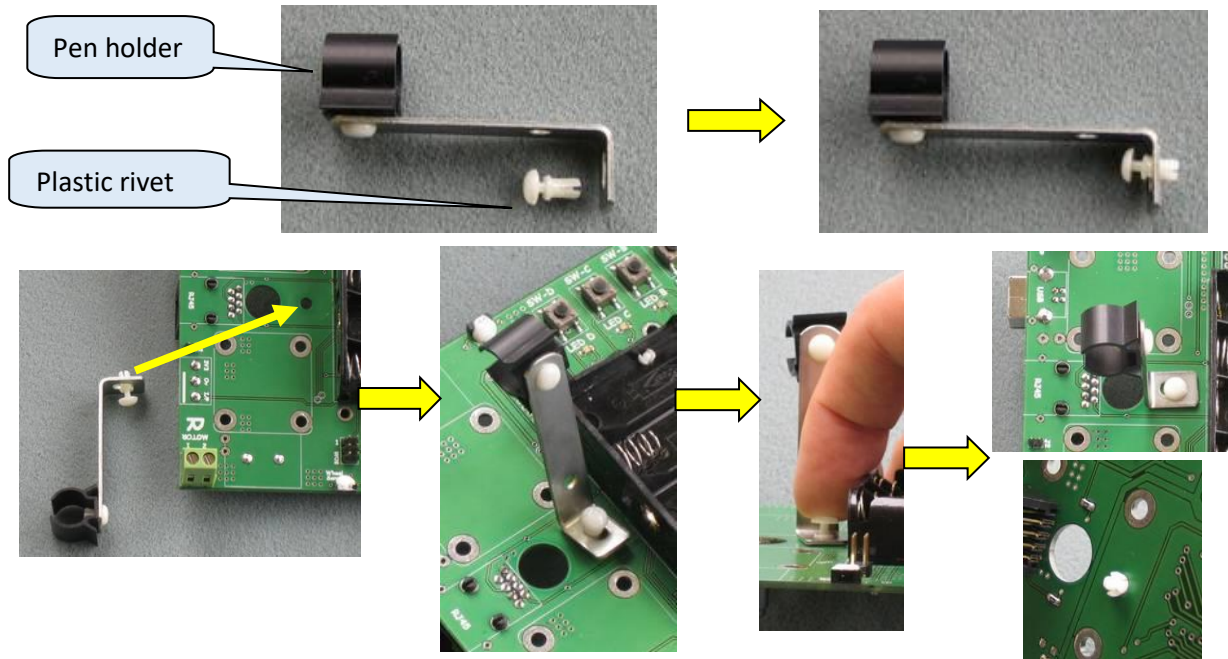


Switch controller

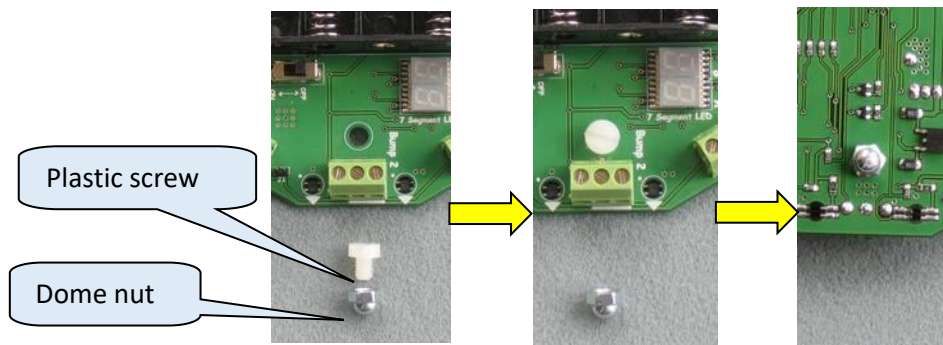
Robot circuit board

Pen holder

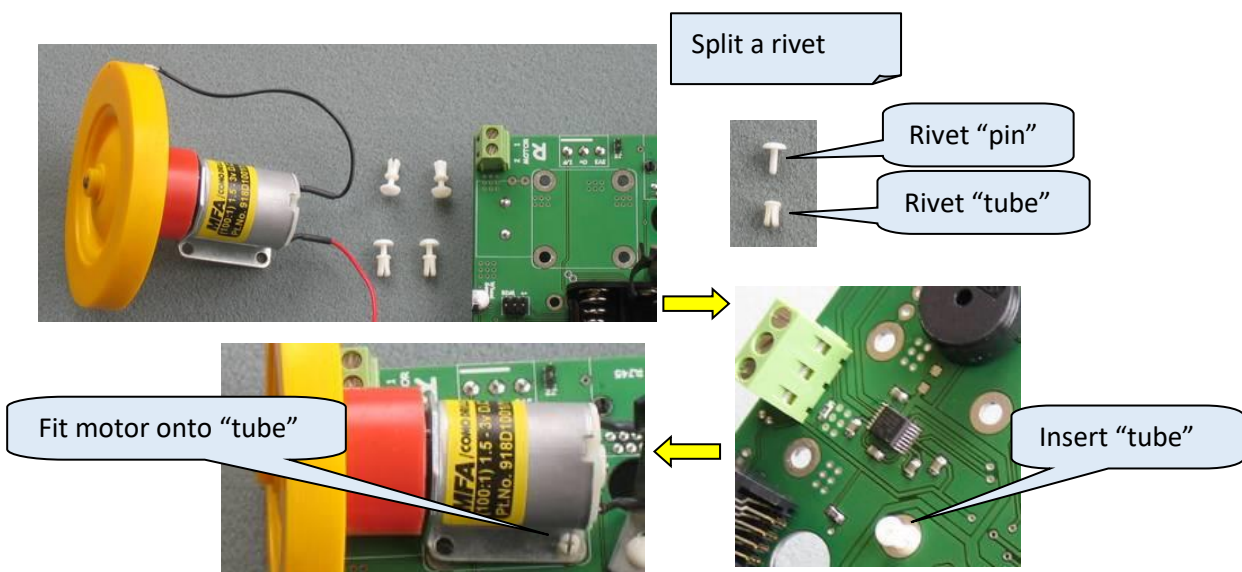
1. Fit pen holder



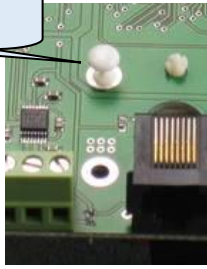
1. Fit front skid



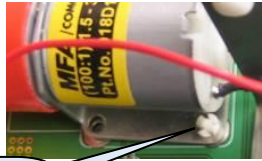
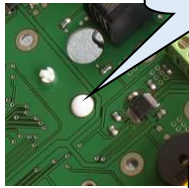
3. Fit motors



Fit pin into tube

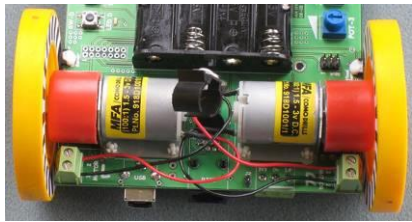
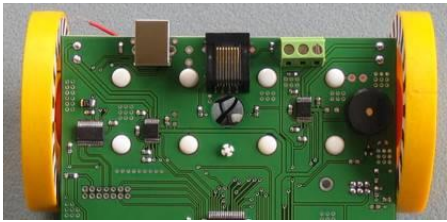


and push



One rivet in

Repeat for all eight motor rivets

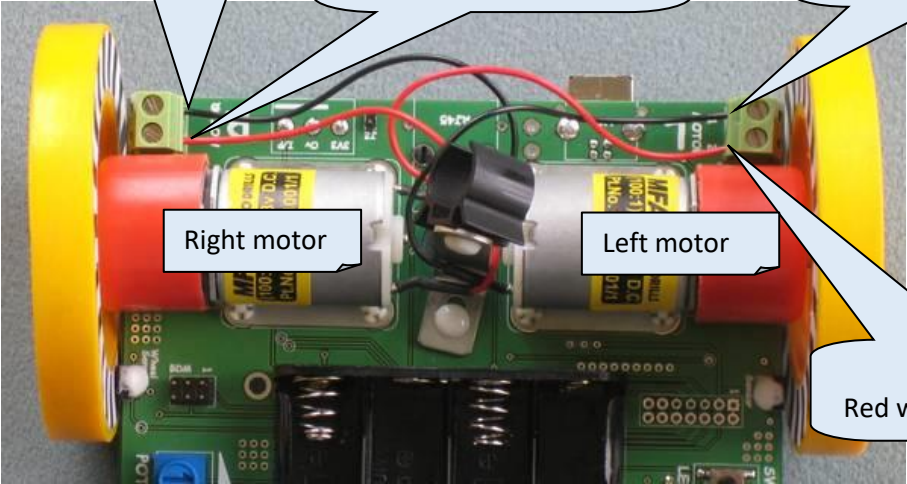


4. Wire motors

RIGHT MOTOR
Black wire to terminal 1

RIGHT MOTOR
Red wire to terminal 2

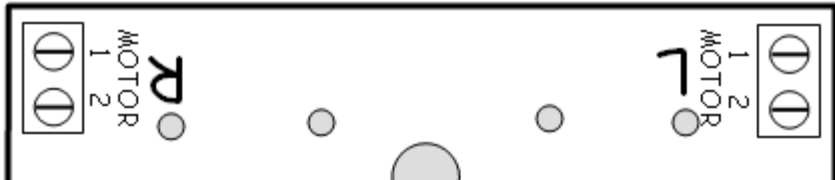
LEFT MOTOR
Black wire to terminal 1



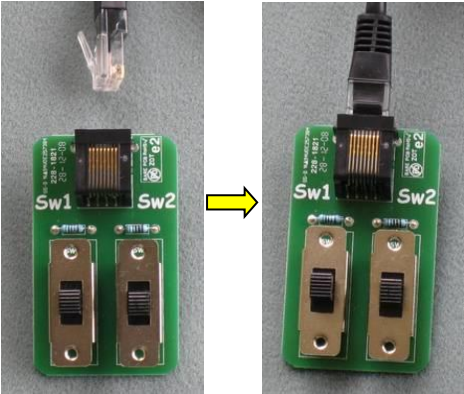
Right motor

Left motor

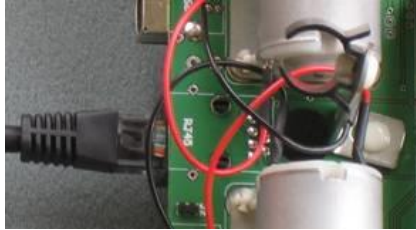
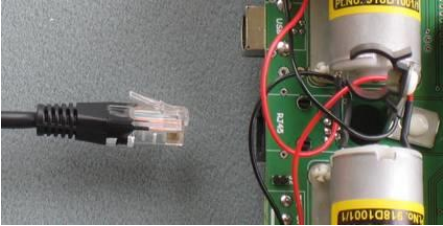
LEFT MOTOR
Red wire to terminal 2



5. Connect switch controller

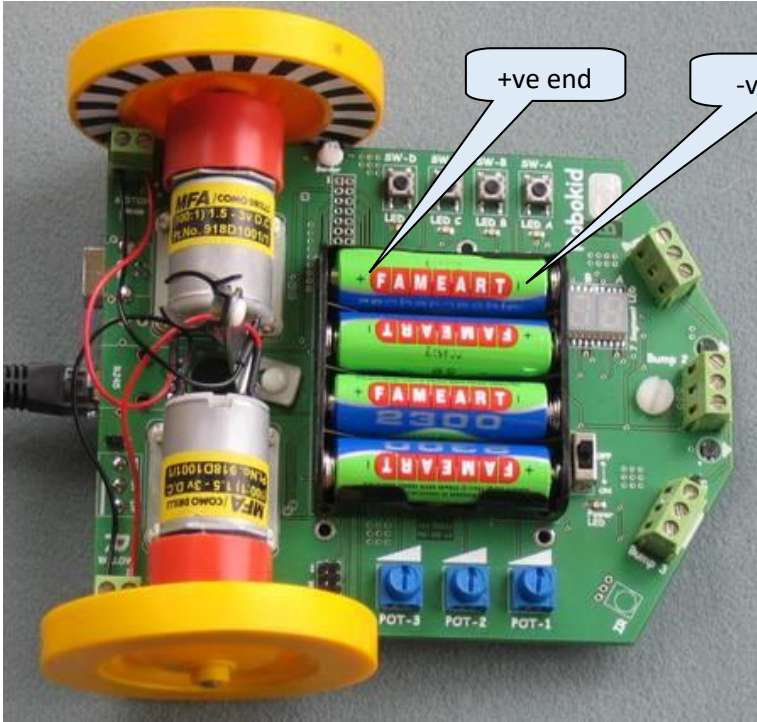


Connect one end of cable to the switch controller



Connect other end to the robot

6. Install batteries



+ve end

-ve end